

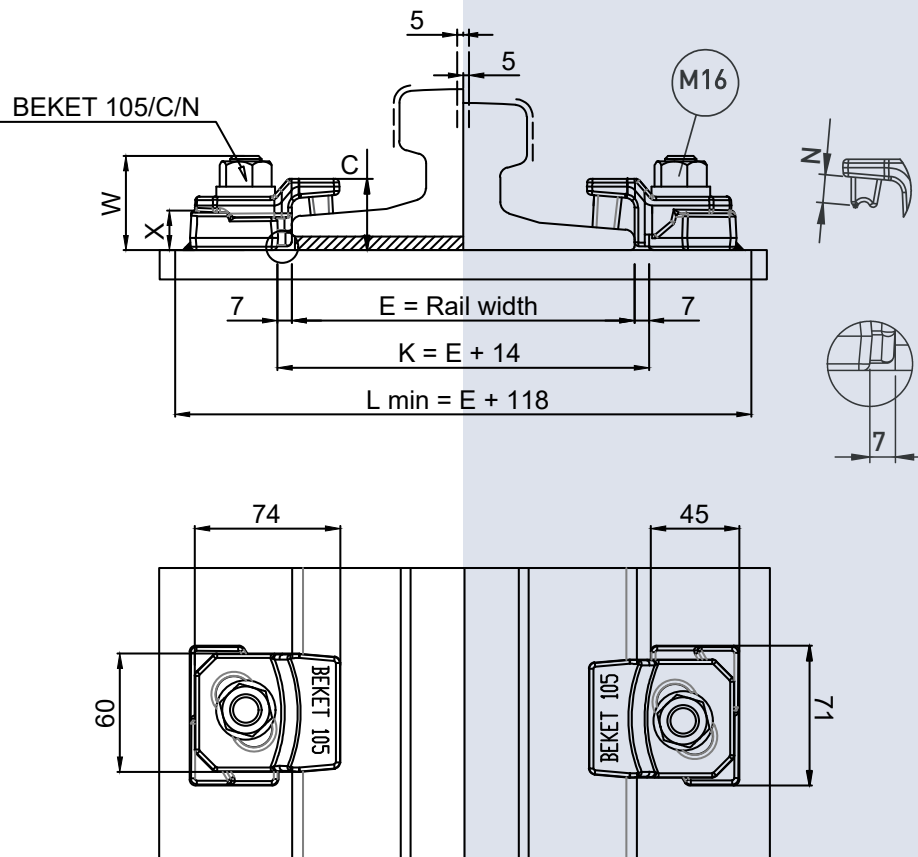
CLIPS NO	X	C	W	N	Weight (Kg)
BEKET 105/36/9	20	36	48	9	0,715
BEKET 105/36/13	20	36	48	13	0,735
BEKET 105/36/19	20	36	48	19	0,750
BEKET 105/36/22	20	36	48	22	0,765

### TECHNICAL SPECIFICATIONS

- Max side load 120 kN
- Lateral adjustment 10 mm
- Bolt M16 Grade 8.8
- Tightening Torque 175 Nm
- Steel Quality St52-3

#### 1 | RAIL WITH PAD

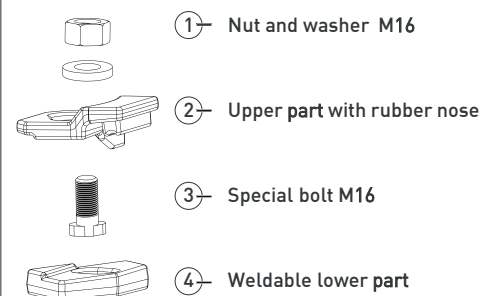
#### 2 | RAIL WITHOUT PAD



### MAIN FEATURES

- 1- BEKET 105 welded rail clips, which are produced from 2 forged parts as upper and lower enables ease of assembly thanks to its special desing.
- 2- The clips can preferred for rails with or without pads.
- 3- The two main parts are locked together with special bolt.
- 4- The rubber nose increases the tolerances of the rail support structures, reduces the stress of the connections, allows a better fixing of the rail.

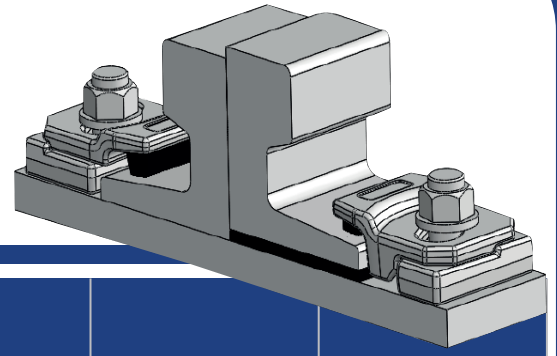
### COMPONENTS

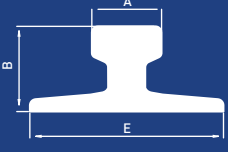
- 
- 1- Nut and washer M16
  - 2- Upper part with rubber nose
  - 3- Special bolt M16
  - 4- Weldable lower part

- Flange nut can also be used on request. Please consult us for using flange nut.

# 105

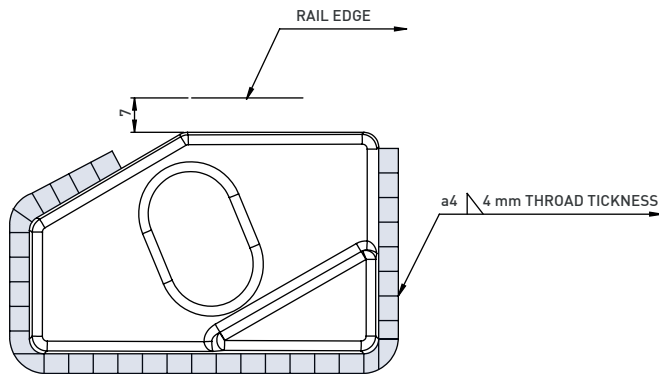
## Beket 105 Welded Rail Clips



	A	B	E	Without Pad	With Pad
A45	45	55	125	105/36/22	105/36/13
A55	55	65	150	105/36/19	105/36/13
A65	65	75	175	105/36/19	105/36/13
A75	75	85	200	105/36/19	105/36/13
S20	44	100	82	105/36/22	105/36/13
S24	53	115	90	105/36/22	105/36/13
S30	60,3	108	108	105/36/19	105/36/13
S31	56	125	106	105/36/22	105/36/13
S33	58	134	105	105/36/19	105/36/13
S41 A	67	138	125	105/36/19	105/36/13
S49	67	149	125	105/36/19	105/36/13
39E1	63,5	133,4	117,5	105/36/19	105/36/13
UIC 54	70	159	140	105/36/19	105/36/13
P24	51	107	92	105/36/22	105/36/13
P43	70	140	114	105/36/19	105/36/9
P50	72	152	132	105/36/19	105/36/9
KP70	72	120	120	105/36/19	105/36/13
KP80	80	130	130	105/36/19	105/36/13

Clip can be with more type of rails than those listed.

### WELD DETAIL



### INSTALLATION INSTRUCTIONS:

Weld all round the clip base, except the side closest and parallel to the rail with a 4 mm throat thickness fillet weld, using low hydrogen electrodes. Recommended electrodes AWS E7018 or E7028. Clip base is made from weldable grade steel. Please consult us for continuous welding requirement.

#### ELEKTRODE

AWS A5.1 1-04 E7018-1  
EN ISO 2560-A E42 4 B42 H5  
CE EN 13479

#### ROD

AWS A5.18 ER 70S-6; SG3  
EN ISO 1668 W 4Si1; SG3

