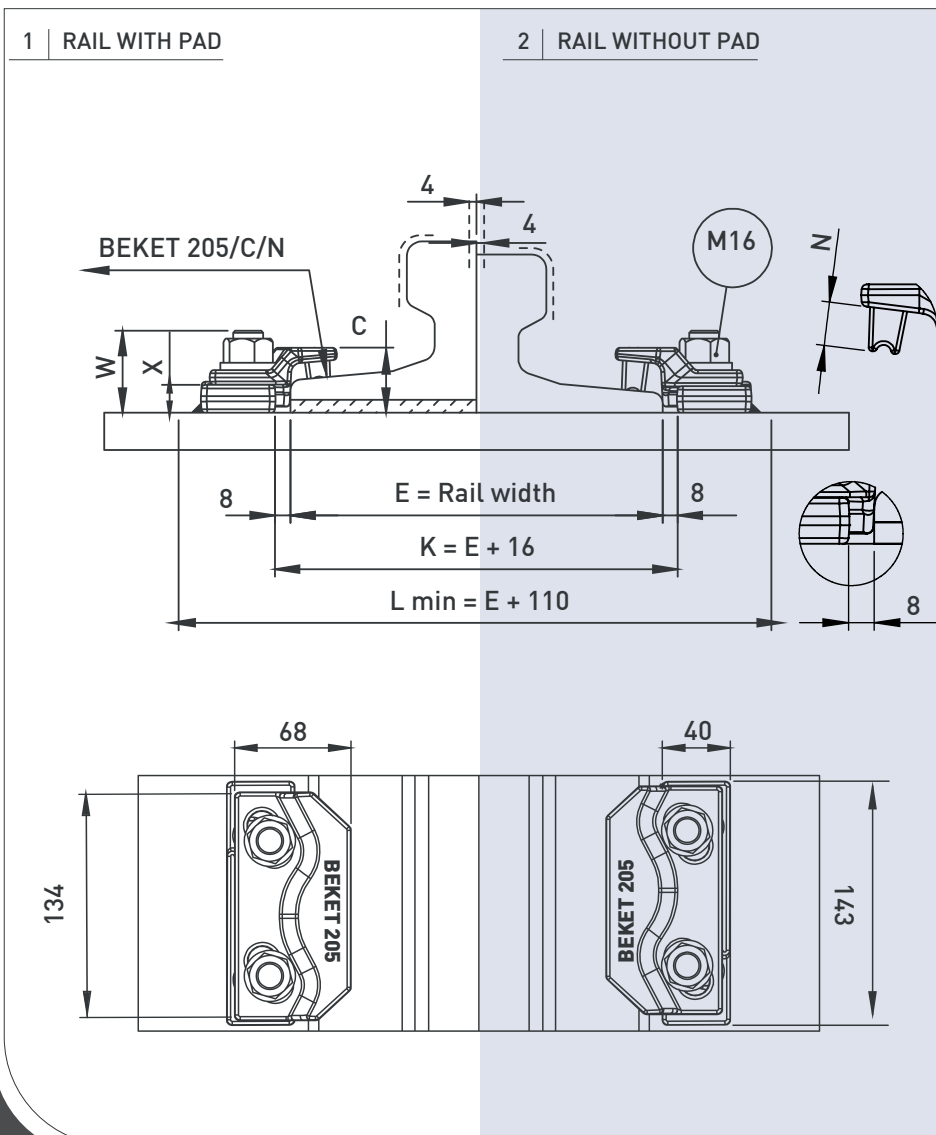


CLIPS NO	X	C	W	N	Weight (Kg)
BEKET 205/35/12	18	35	45	12	1,420
BEKET 205/35/18	18	35	45	18	1,440
BEKET 205/35/22	18	35	45	22	1,490

### TECHNICAL SPECIFICATIONS

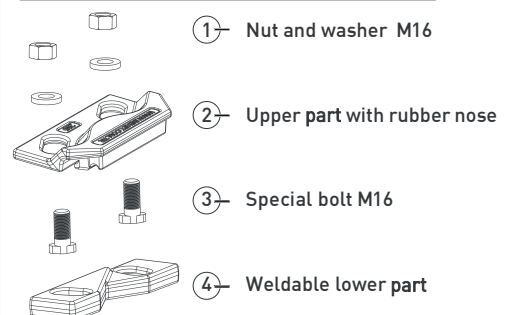
- Max side load 170 kN
- Lateral adjustment 8 mm
- Bolt M16 Grade 8.8
- Tightening Torque 175 Nm
- Steel Quality St52-3



### MAIN FEATURES

- 1- BEKET 205 welded rail clips, which are produced from 2 forged parts as upper and lower enables ease of assembly thanks to its special desing.
- 2- The clips can preferred for rails with or without pads.
- 3- The two main parts are locked together with special bolt.
- 4- The rubber nose increases the tolerances of the rail support structures, reduces the stress of the connections, allows a better fixing of the rail.

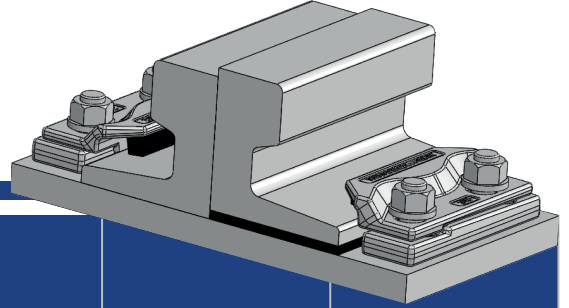
### COMPONENTS

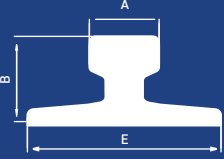


- Flange nut can also be used on request. Please consult us for using flange nut.

# 205

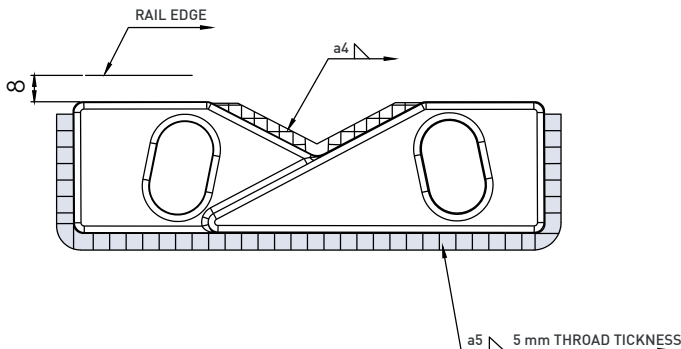
## Beket 205 Welded Rail Clips



	A	B	E	Without Pad	With Pad
A45	45	55	125	205/35/22	205/35/18
A55	55	65	150	205/35/22	205/35/18
A65	65	75	175	205/35/22	205/35/18
A75	75	85	200	205/35/22	205/35/18
A100	100	95	200	205/35/22	205/35/12
A120	120	105	220	205/35/18	205/35/12
S49	67	149	125	205/35/22	205/35/12
S54	67	154	125	205/35/18	205/35/12
UIC54	70	159	140	205/35/22	205/35/12
UIC60	72	172	150	205/35/22	205/35/12
S41A	67	138	125	205/35/22	205/35/18
50E2	72	151	140	205/35/22	205/35/12
P43	70	140	114	205/35/18	205/35/12
P50	72	152	132	205/35/18	205/35/12
P65	73	180	150	205/35/18	205/35/12
KP70	70	120	120	205/35/22	205/35/12
KP80	80	130	130	205/35/22	205/35/12
KP100	100	150	150	205/35/18	205/35/12
CR105	65,1	131,8	131,8	205/35/22	205/35/12
CR135	87,3	146,1	131,8	205/35/18	205/35/12

Clip can be with more type of rails than those listed.

### WELD DETAIL



### INSTALLATION INSTRUCTIONS:

Weld all round the clip base, except the side closest and parallel to the rail with a 5 mm throat thickness fillet weld, using low hydrogen electrodes. Recommended electrodes AWS E7018 or E7028. Clip base is made from weldable grade steel. Please consult us for continuous welding requirement.

**ELEKTRODE**  
 AWS A5.1 1-04 E7018-1  
 EN ISO 25660-A E42 4 B42 H5  
 CE EN 13479

**ROD**  
 AWS A5.18 ER 70S-6: SG3  
 EN ISO 1668 W 4Si1: SG3

