

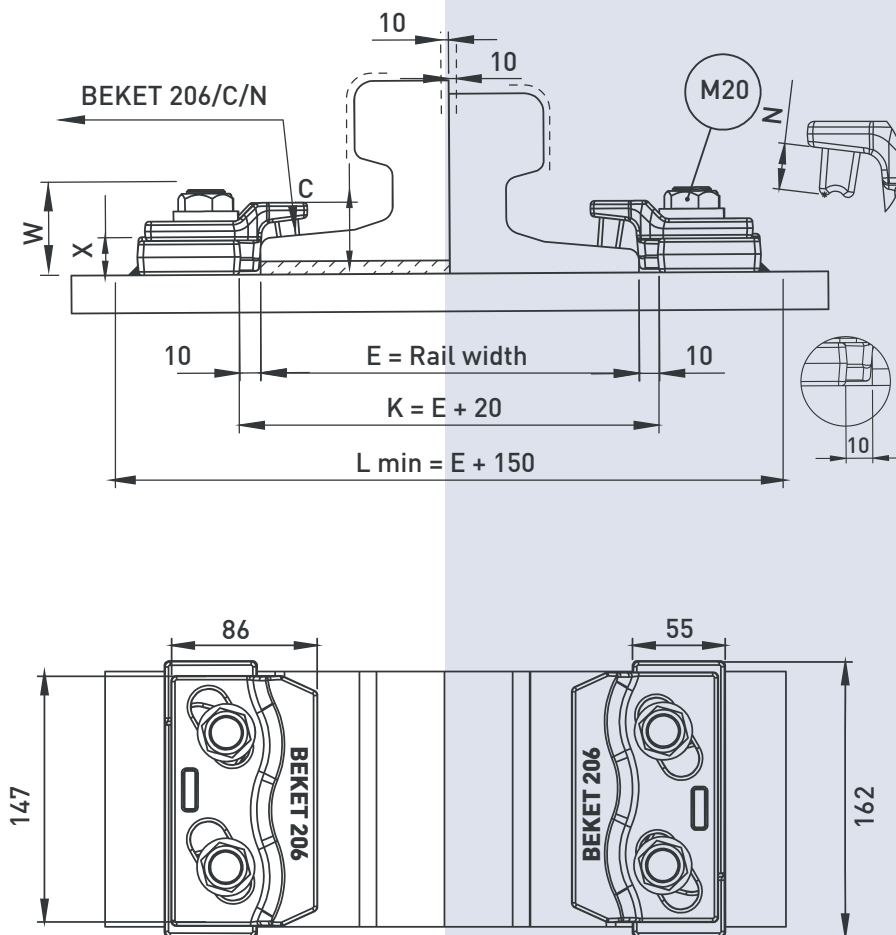
CLIPS NO	X	C	W	N	Weight (Kg)
BEKET 206/38/14	20	38	55	14	2,350
BEKET 206/38/17	20	38	55	17	2,385
BEKET 206/38/20	20	38	55	20	2,405
BEKET 206/44/14	20	44	55	14	2,360
BEKET 206/44/17	20	44	55	17	2,400
BEKET 206/44/20	20	44	55	20	2,480
BEKET 206/48/14	24	48	59	14	2,585
BEKET 206/48/17	24	48	59	17	2,620
BEKET 206/48/20	24	48	59	20	2,700

TECHNICAL SPECIFICATIONS

- Max side load 250 kN
- Lateral adjustment 20 mm
- Bolt M20 Grade 8.8
- Tightening Torque 300 Nm
- Steel Quality St52-3

1 | RAIL WITH PAD

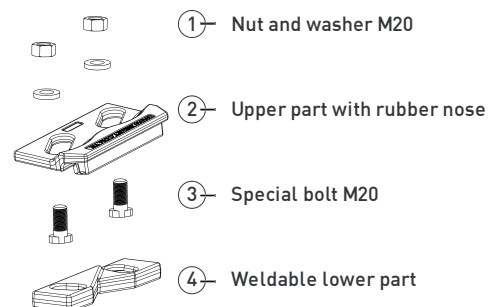
2 | RAIL WITHOUT PAD



MAIN FEATURES

1. BEKET 206 welded rail clips, which are produced from 2 forged parts as upper and lower enables ease of assembly thanks to its special desing.
2. The clips can preferred for rails with or without pads.
3. The two main parts are locked together with special bolt.
4. The rubber nose increases the tolerances of the rail support structures, reduces the stress of the connections, allows a better fixing of the rail.

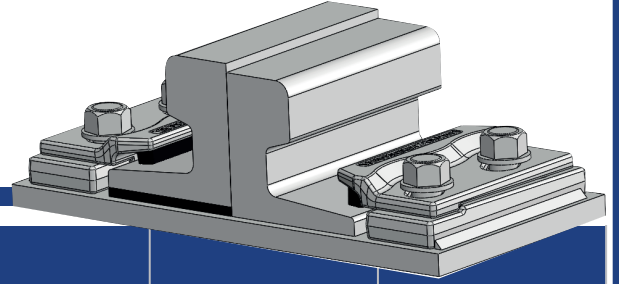
COMPONENTS

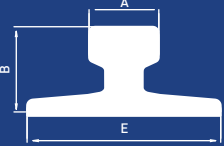


- Flange nut can also be used on request. Please consult us for using flange nut.

206

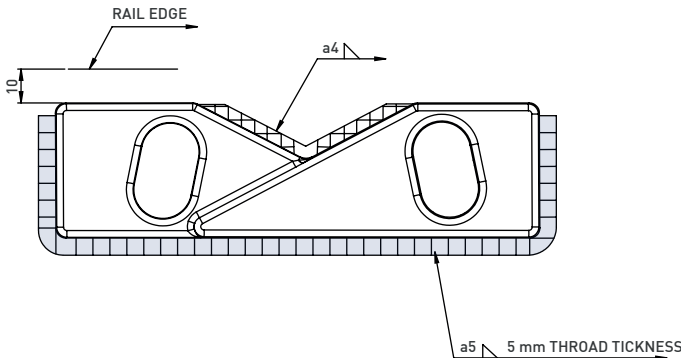
Beket 206 Welded Rail Clips



	A	B	E	Without Pad	With Pad
A65	65	75	175	206/38/20	206/38/17
A75	75	85	200	206/38/20	206/38/14
A100	100	95	200	206/38/20	206/38/14
A120	120	105	220	206/38/20	206/38/14
A150	150	150	220	206/38/17	206/44/17
CR 73	63,5	127	127	206/38/17	206/44/17
CR 100	65,1	131,8	131,8	206/38/14	206/44/14
CR 171	101,6	152,4	152,4	206/38/17	206/44/17
CR 175	102,4	152,4	152,4	206/38/17	206/44/17
MRS 73	70	157	146	206/38/14	206/44/14
MRS 87 A	101,6	152,4	152,4	206/38/14	206/44/17
MRS 125	120	180	180	206/44/17	206/48/14
P 50	72	152	132	206/38/20	206/44/17
P 65	73	180	150	206/38/20	206/44/17
KP 100	100	150	150	206/38/20	206/38/14
KP 120	120	170	170	206/38/17	206/44/17
KP 140	140	170	170	206/44/17	206/48/17

Clip can be with more type of rails than those listed.

WELD DETAIL



INSTALLATION INSTRUCTIONS:

Weld all round the clip base, except the side closest and parallel to the rail with a 5 mm throat thickness fillet weld, using low hydrogen electrodes. Recommended electrodes AWS E7018 or E7028. Clip base is made from weldable grade steel. Please consult us for continuous welding requirement.

ELEKTRODE

AWS A5.1 1-04 E7018-1
EN ISO 2560-A E42 4 B42 H5
CE EN 13479

ROD

AWS A5.18 ER 70S-6: S63
EN ISO 1668 W 4Si1: S63



Deutsche
Akkreditierungsstelle
D-ZM-12007-01-00



TÜRKAK BDS NO
YS-2809-9621