

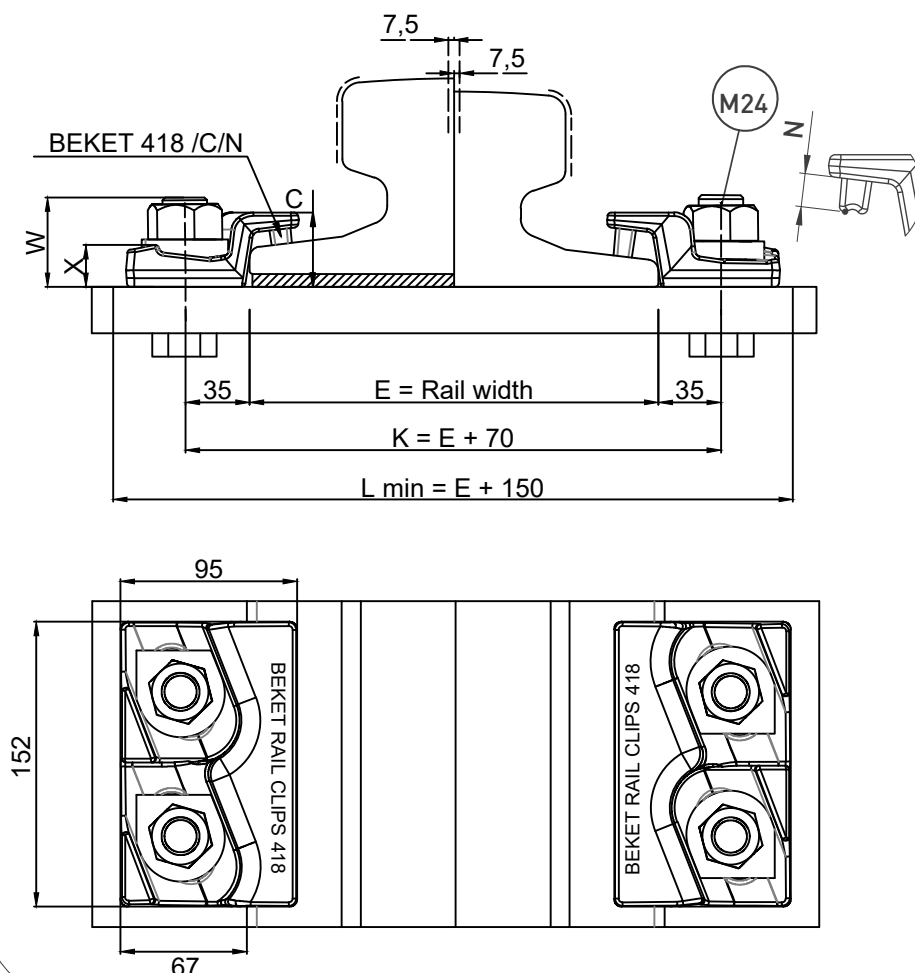
CLIPS NO	X	C	W	N	Weight (Kg)
BEKET 418/40/12	21	40	50	12	2,350
BEKET 418/40/18	21	40	50	18	2,450

TECHNICAL SPECIFICATIONS

- Max side load 250 kN
- Lateral adjustment 15 mm
- Bolt M24 Grade 8.8
- Tightening Torque 550 Nm
- Steel Quality St52-3

1 | RAIL WITH PAD

2 | RAIL WITHOUT PAD



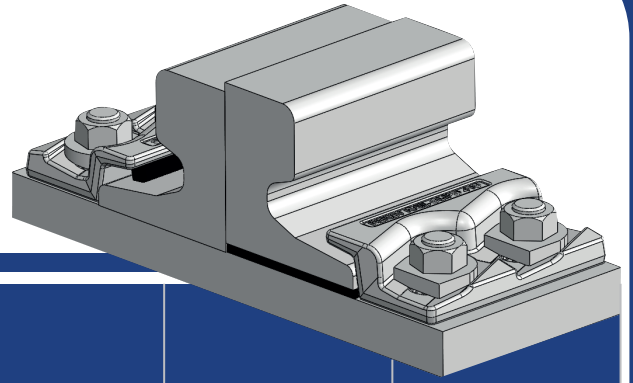
MAIN FEATURES

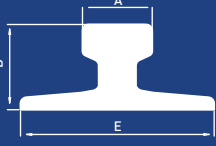
- 1- BEKET 418 bolted rail clip, which is produced from a forged part, enables ease of assembly thanks to its special design.
- 2- The clips can be preferred for rails with or without pads.
- 3- The main part is locked to rail with special bolt.
- 4- The rubber nose increases the tolerances of the rail support structures, reduces the stress of the connections, allows a better fixing of the rail.

- Flange nut can also be used on request. Please consult us for using flange nut.

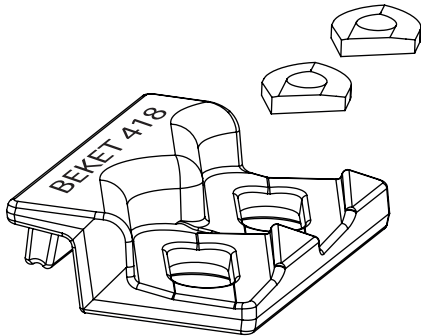
418

Beket 418 Bolted Rail Clips



	A	B	E	Without Pad	With Pad
A120	120	105	220	418/40/18	418/40/12
A150	150	150	220	418/40/18	418/40/12
CR73	100	135	140	418/40/18	418/40/12
CR104	63,5	127	127	418/40/18	418/40/12
CR135	79,4	146,1	131,8	418/40/18	418/40/12
CR171	101,6	152,4	152,4	418/40/18	418/40/12
CR175	102,4	152,4	152,4	418/40/18	418/40/12
MRS73	70	157	146	418/40/18	418/40/12
MRS86	102	102	165	418/40/18	418/40/12
MRS87A	101,6	152,4	152,4	418/40/18	418/40/12
KP100	100	150	150	418/40/18	418/40/12
KP120	120	170	170	418/40/18	418/40/12

Clip can be with more type of rails than those listed.



INSTALLATION INSTRUCTIONS:

The main component is first positioned on the bolt against the rail and the special washer is then positioned on the main component. The nut is hand tightened. Hammer is used for tighter contact. The main component is in position, use an electrical or pneumatic wrench to torque the nut. Please contact BEKET for full installation instructions.



Deutsche
Akkreditierungsstelle
D-ZM-12007-01-00

