

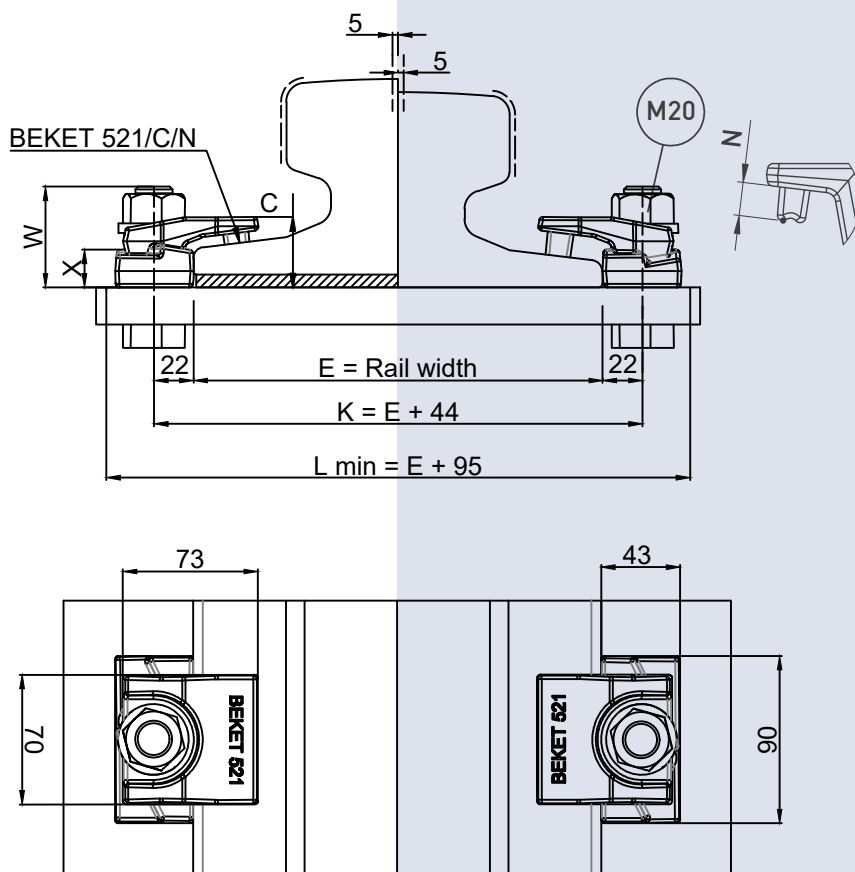
CLIPS NO	X	C	W	N	Weight (Kg)
BEKET 521/38/14	18	38	55	14	0,790
BEKET 521/38/20	18	38	55	20	0,800

### TECHNICAL SPECIFICATIONS

- Max side load 90 kN
- Lateral adjustment 10 mm
- Bolt M20 Grade 8.8
- Tightening Torque 390 Nm
- Steel Quality St52-3

1 | RAIL WITH PAD

2 | RAIL WITHOUT PAD



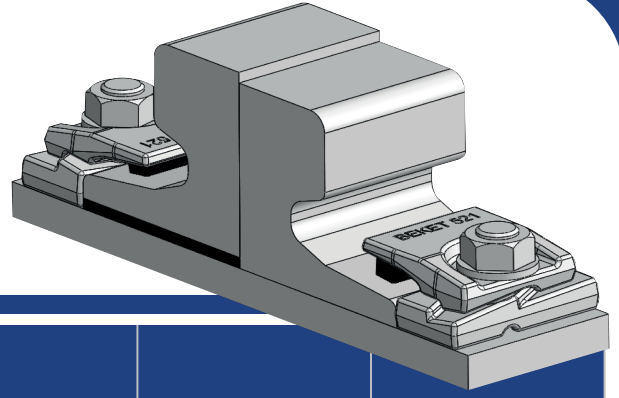
### MAIN FEATURES

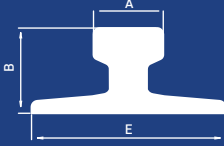
- 1- BEKET 521 bolted rail clip, which is produced from a forged part, enables ease of assembly thanks to its special design.
- 2- The clips can be preferred for rails with or without pads.
- 3- The main part is locked to rail with special bolt.
- 4- The rubber nose increases the tolerances of the rail support structures, reduces the stress of the connections, allows a better fixing of the rail.

- Flange nut can also be used on request. Please consult us for using flange nut.

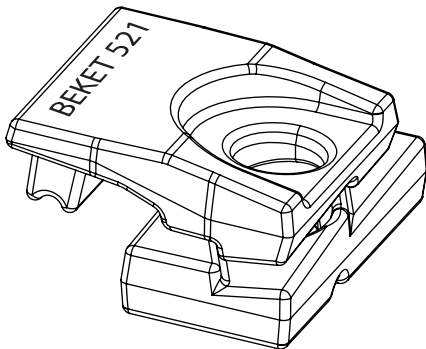
# 521

## Beket 521 Bolted Rail Clips



	A	B	E	Without Pad	With Pad
A65	65	75	175	521/38/20	521/38/14
A75	75	85	200	521/38/20	521/38/14
A100	100	95	200	521/38/20	521/38/14
A120	120	105	220	521/38/20	521/38/14
CR105	65,1	131,8	131,8	521/38/20	521/38/14
S33	58	134	105	521/38/20	521/38/14
S41 A	67	138	125	521/38/20	521/38/14
S49	67	149	125	521/38/20	521/38/14
S54	67	154	125	521/38/20	521/38/14
50 E2	72	151	140	521/38/20	521/38/14
UIC 54	70	159	140	521/38/20	521/38/14
UIC 60	72	172	150	521/38/20	521/38/14
56 E1	69,85	158,75	140	521/38/20	521/38/14
P43	70	140	114	521/38/20	521/38/14
P50	72	152	132	521/38/20	521/38/14

Clip can be with more type of rails than those listed.



### INSTALLATION INSTRUCTIONS:

The main component is first positioned on the bolt against the rail and the special washer is then positioned on the main component. The nut is hand tightened. Hammer is used for tighter contact. The main component is in position, use an electrical or pneumatic wrench to torque the nut. Please contact BEKET for full installation instructions.

