

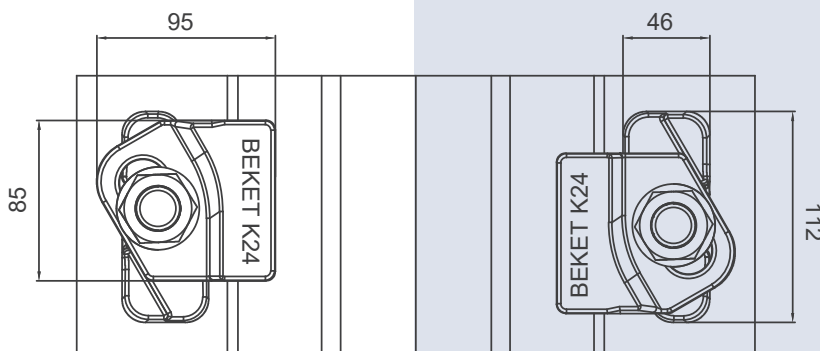
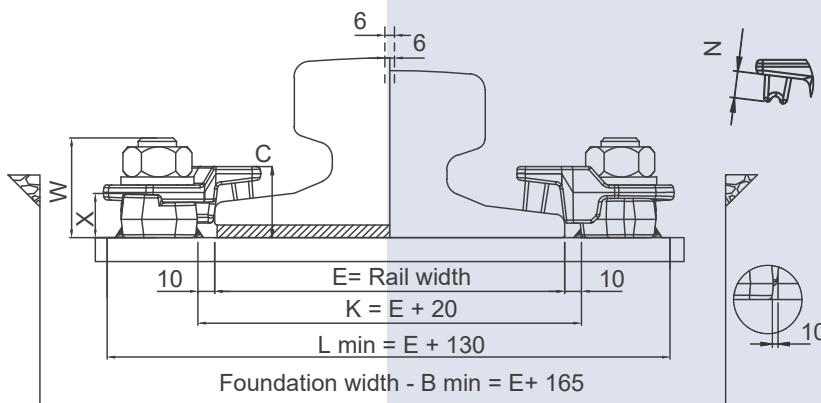
CLIPS NO	X	C	W	N	Weight (Kg)
BEKET K24 K /36/14	26	36	63	14	1,250
BEKET K24 K /36/16	26	36	63	16	1,280
BEKET K24 K /36 /21	26	36	63	21	1,320
BEKET K24 /42/14	26	42	63	14	1,480
BEKET K24 /42/16	26	42	63	16	1,540
BEKET K24 /42/21	26	42	63	21	1,620

### TECHNICAL SPECIFICATIONS

- Max side load 235 kN
- Lateral adjustment 12 mm
- Bolt M24 Grade 8.8
- Tightening Torque 600 Nm
- Steel Quality St52-3

1 | RAIL WITH PAD


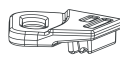

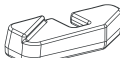
2 | RAIL WITHOUT PAD



### MAIN FEATURES

- 1- BEKET K24 welded rail clips, which are produced from 2 forged parts as upper and lower enables ease of assembly thanks to its special desing.
- 2- The clips can preferred for rails with or without pads.
- 3- The two main parts are locked together with special bolt.
- 4- The rubber nose increases the tolerances of the rail support structures, reduces the stress of the connections, allows a better fixing of the rail.

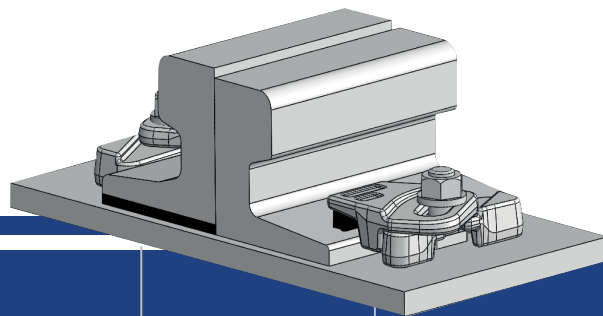
### COMPONENTS

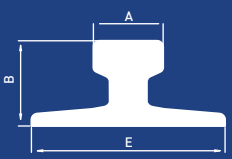
-  ① Nut and washer M24
-  ② Upper part with rubber nose
-  ③ Special bolt M24
-  ④ Weldable lower part

- Flange nut can also be used on request. Please consult us for using flange nut.

# K24

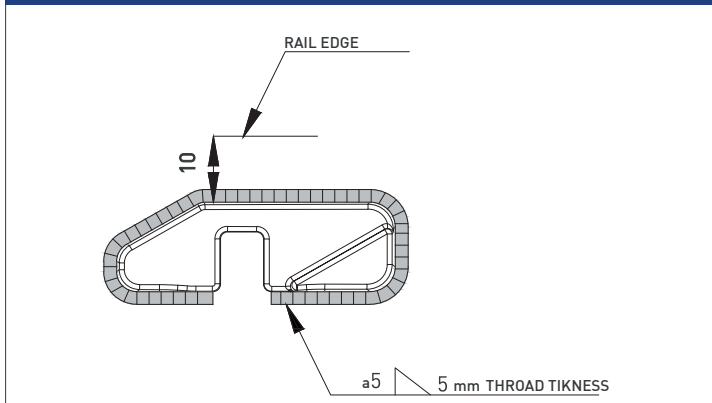
## Beket K24 Welded Rail Clips



	A	B	E	Without Pad	With Pad
A75	75	85	200	K24 K/36/21	K24 K/36/16
A100	100	95	200	K24 K/36/21	K24 K/36/16
A120	120	105	220	K24 K/36/16	K24 /42/16
A150	150	150	220	K24 K/36/16	K24 /42/14
CR73	100	135	140	K24 K/36/16	K24 /42/16
CR100	120	150	155	K24 /42/21	K24 /42/14
CR135	76,2	146	131,8	K24 K/36/16	K24 /42/16
CR175	102,4	152,4	152,4	K24 K/36/16	K24 /42/16
MRS87A	101,6	152,4	152,4	K24 K/36/14	K24 /42/14
S49	67	149	125	K24 K/36/21	K24 K/36/14
S54	67	154	125	K24 K/36/21	K24 K/36/14
UIC54	70	159	140	K24 K/36/21	K24 K/36/14
UIC60	72	172	150	K24 K/36/21	K24 K/36/14
P50	72	152	132	K24 K/36/21	K24 /42/16
P65	73	180	150	K24 K/36/21	K24 /42/16
KP70	70	120	120	K24 K/36/21	K24 /42/21
KP80	80	130	130	K24 K/36/21	K24 /42/21
KP100	100	150	150	K24 K/36/21	K24 /42/16
KP120	120	170	170	K24 K/36/16	K24 /42/14

Clip can be with more type of rails than those listed.

### WELD DETAIL



### INSTALLATION INSTRUCTIONS:

Weld all round the clip base, except the side closest and parallel to the rail with a 5 mm throat thickness fillet weld, using low hydrogen electrodes. Recommended electrodes AWS E7018 or E7028. Clip base is made from weldable grade steel. Please consult us for continuous welding requirement.

#### ELEKTRODE

AWS A5.1 1-04 E7018-1  
EN ISO 2560-A E42 4 B42 H5  
CE EN 13479

#### ROD

AWS A5.18 ER 70S-6: S63  
EN ISO 1668 W 4Si1: S63

