

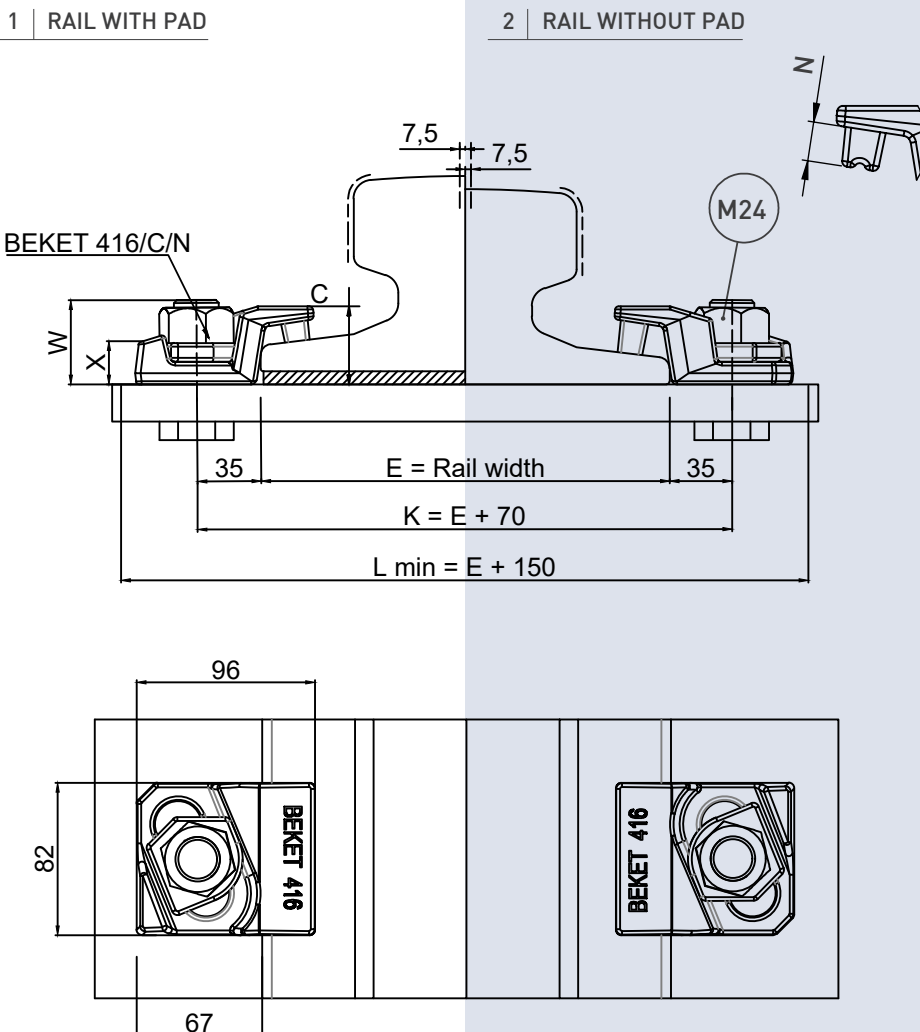
CLIPS NO	X	C	W	N	Weight (Kg)
BEKET 416/42/9	22	42	45	9	0,900
BEKET 416/42/14	22	42	45	14	0,915
BEKET 416/42/21	22	42	45	21	0,930

TECHNICAL SPECIFICATIONS

- Max side load 160 kN
- Lateral adjustment 15 mm
- Bolt M24 Grade 8.8
- Tightening Torque 550 Nm
- Steel Quality St52-3

MAIN FEATURES

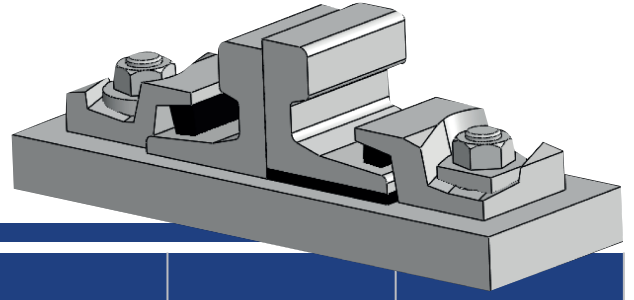
- 1- BEKET 416 bolted rail clip, which is produced from a forged part, enables ease of assembly thanks to its special design.
- 2- The clips can be preferred for rails with or without pads.
- 3- The main part is locked to rail with M24 bolt and special washer.
- 4- The rubber nose increases the tolerances of the rail support structures, reduces the stress of the connections, allows a better fixing of the rail.

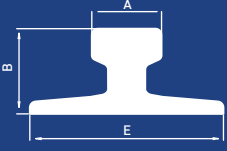


- Flange nut can also be used on request. Please consult us for using flange nut.

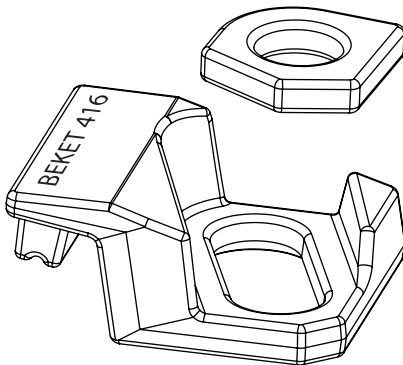
416

Beket 416 Bolted Rail Clips



	A	B	E	Without Pad	With Pad
A100	100	95	200	416/42/21	416/42/19
A120	120	105	220	416/42/21	416/42/14
A150	150	150	220	416/42/21	416/42/14
CR73	100	135	140	416/42/21	416/42/14
CR100	120	150	155	416/42/21	416/42/9
CR104	63,5	127	127	416/42/21	416/42/14
CR105	65,1	131,8	131,8	416/42/21	416/42/14
CR135	79,4	146,1	131,8	416/42/21	416/42/14
CR171	101,6	152,4	152,4	416/42/21	416/42/14
CR175	102,4	152,4	152,4	416/42/21	416/42/14
MRS73	70	157	146	416/42/21	416/42/9
MRS87A	101,6	152,4	152,4	416/42/21	416/42/14
P50	72	152	132	416/42/21	416/42/14
P65	73	180	150	416/42/21	416/42/14
KP100	100	150	150	416/42/21	416/42/14
KP120	120	170	170	416/42/21	416/42/14

Clip can be with more type of rails than those listed.



INSTALLATION INSTRUCTIONS:

The main component is first positioned on the bolt against the rail and the special washer is then positioned on the main component. The nut is hand tightened. Hammer is used for tighter contact. The main component is in position, use an electrical or pneumatic wrench to torque the nut. Please contact BEKET for full installation instructions.

